



Mini Looper



User Manual

# Table of content

Table of content .....	2
1.Main Features .....	3
2. Activate MiniLooper .....	4
3. Basic Operation .....	5
4. Loop Parameters .....	6
4.1 Loop on/off.....	6
4.2 Size .....	7
4.3 Select the FX.....	8
4.3.1 Gate.....	9
4.3.2 Bit Crush .....	10
4.3.3 Auto-Pan.....	11
4.3.4 Hipass .....	12
4.3.5 Phaser.....	13
4.3.6 Time Expand.....	14
4.3.7 Reverb .....	15
4.3.8 Delay.....	16
4.4 FX.....	17
4.5 Rev.....	17
4.6 Pitch.....	18
5.1 Settings view .....	19
5.1.1 Plugin size.....	20
5.1.2. Set as Default .....	21
5.1.3. Reset to Factory.....	22
5.1.4. Help .....	23

## 1.Main Features



Thank you for buying MiniLooper!

MiniLooper is not a traditional loop recorder.

This plugin effect is more considered like a glitch effect tool by our team, and we love to use it to create breaks at the end of measures and unstructure the sound, looping it fast to create roll effects.

With this plugin, you can loop real time audio to apply time and pitch changes to create effects on your musical creations.

It increases your workflow, because you no more need to lose hours of your time editing your sequences to create rhythm, glitch, drill, time effects.

8 effects are included that can be applied to each loop: Bit reducer, Auto-Pan, Hi-pass filter, Phaser, and Time expand effect. You can apply those effects in real-time while reversing, pitch shifting, and loop size range changing.

Try it on you drum bus, or even on the master, you could hear some good surprises.

The plugin has been designed to ease assignation with an external controller in the most popular DAWs.

This tool is useful for making live glitch effects, or to program them when you create your tune in studio.

## 2. Activate MiniLooper



The first time you launch the MiniLooper in your DAW the settings view of the MiniLooper appears.

Enter your user name ( ex : [user@audioblast.me](mailto:user@audioblast.me) ) and the serial you received by e-mail then press “Enter” or “Return” and exit the setting view by clicking on the red cross on the top right of the Interface.

**Until the VST is unlocked you will have no sound!**

### 3. Basic Operation



Double click on any knob to reset at the default value.

We recommend assigning it to an external controller.

Using a controller allows you to assign parameters and get spontaneity using the MiniLooper. You could assign each parameters described below to increase your workflow with the MiniLooper.

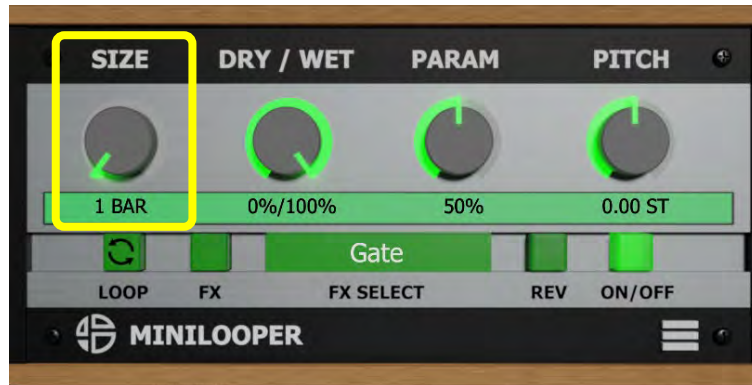
## 4. Loop Parameters

### 4.1 Loop on/off



Element	Description
<a href="#">Loop on/off</a>	Click on the <a href="#">Loop</a> button to activate the loop. The loop function will stay activated, <a href="#">Click</a> again to de-activate.

## 4.2 Size



Element	Description
Size	This knob defines the Size of the loop: 1 Bar ,1/2, 1/4, 1/8, 1/ 16, 1/32

## 4.3 Select the FX



Click on effect display to open the FX select menu.  
Mini Looper has eight integrated effects to select.  
Click on the menu to select an effect.

To activate the effect, Click on the FX button.



## 4.3.1 Gate



Element	Description
<p><a href="#">Gate</a></p>	<p>.This “Gate” defines the time at which the slice volume is muted.</p> <p>50% means the slice plays half time (1/2 BAR for a 1 BAR slice, 1/4 BAR for a 1/2 BAR slice etc..)</p> <p>Use Dry/Wet knob to set the amount of signal.            Dry simply means without any effect. Wet means with effect.            100% dry = no effect            100% wet = only effect</p>

## 4.3.2 Bit Crush



Element	Description
Bit Crush	<p>It works like a Bit Reducer effect. It reduces the sample rate, from your selected sample rate in your DAW to 2000Hz.</p> <p>The parameter knob at 0 % changes nothing, at 100% you get the maximum sample rate reduction.</p> <p>Use Dry/Wet knob to set the amount of signal.            Dry simply means without any effect. Wet means with effect.            100% dry = no effect            100% wet = only effect</p>

### 4.3.3 Auto-Pan



Element	Description
Auto-pan	<p>This is a panoramic effect.</p> <p>The Auto-pan range is synced to the tempo of the host.</p> <p>The parameter changes the rate of the panoramic effect.</p> <p>Use Dry/Wet knob to set the amount of signal.</p> <p>Dry simply means without any effect. Wet means with effect.</p> <p>100% dry = no effect</p> <p>100% wet = only effect</p>

## 4.3.4 Hipass



Element	Description
<a href="#">Hipass</a>	<p>When enabled, this applies a Hi-pass filter. The parameter changes the cut-off of the filter.</p> <p>Use Dry/Wet knob to set the amount of signal. Dry simply means without any effect. Wet means with effect. 100% dry = no effect 100% wet = only effect</p>

## 4.3.5 Phaser



Element	Description
Phaser	<p>When enabled, this applies a phaser effect. The parameter changes the depth of the effect.</p> <p>Use Dry/Wet knob to set the amount of signal. Dry simply means without any effect. Wet means with effect. 100% dry = no effect 100% wet = only effect</p>

## 4.3.6 Time Expand



Element	Description
<a href="#">Time Expand</a>	<p>This effect expands the time of your loop without changing the pitch, in the fashion as vintage samplers. The parameter has no effect.</p> <p>Use Dry/Wet knob to set the amount of signal. Dry simply means without any effect. Wet means with effect.            100% dry = no effect            100% wet = only effect</p>

### 4.3.7 Reverb



Element	Description
<p>Reverb</p>	<p>Parameter knob sets the size of the simulated room. A high value will simulate the reverberation effect of a large room and a low value will simulate the effect of a small room.</p> <p>Use Dry/Wet knob to set the amount of reverb on signal. Dry simply means without any effect. Wet means with effect.            100% dry = no effect            100% wet = only effect</p>

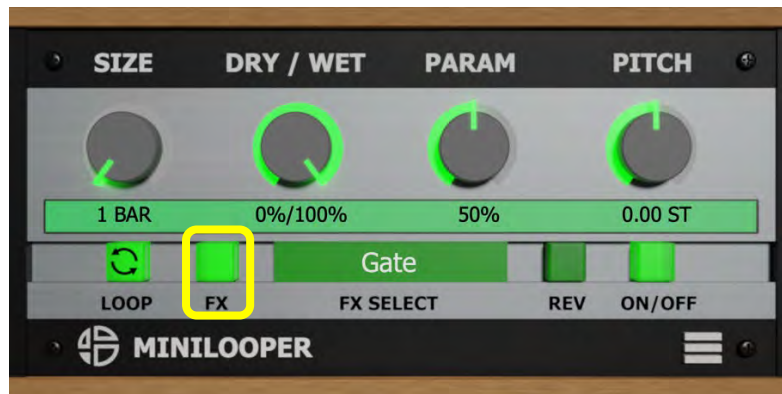
## 4.3.8 Delay



Element	Description
<a href="#">Delay</a>	<p>The delay effect is synchronized to the DAW tempo, at minimum size 1/128 BAR at maximum size : 1 BAR.</p> <p>Use Dry/Wet knob to set the amount of signal.            Dry simply means without any effect. Wet means with effect.            100% dry = no effect            100% wet = only effect</p>

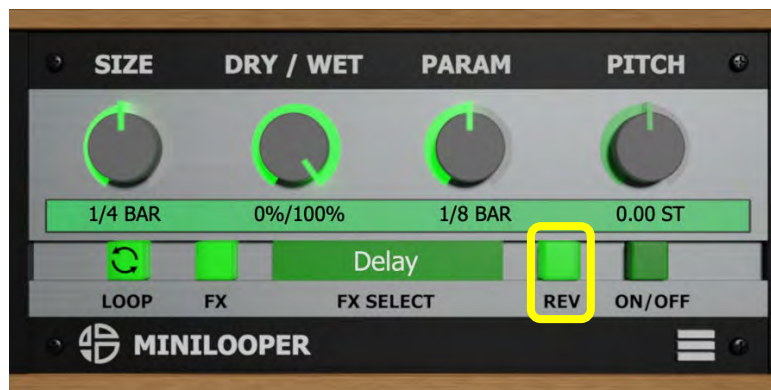


## 4.4 FX



Element	Description
<a href="#">FX</a>	Click on the <a href="#">FX</a> button to activate/de-activate the selected FX.

## 4.5 Rev



Element	Description
<a href="#">REV</a>	Click on the <a href="#">REV</a> button to activate/de-activate the loop reverse.

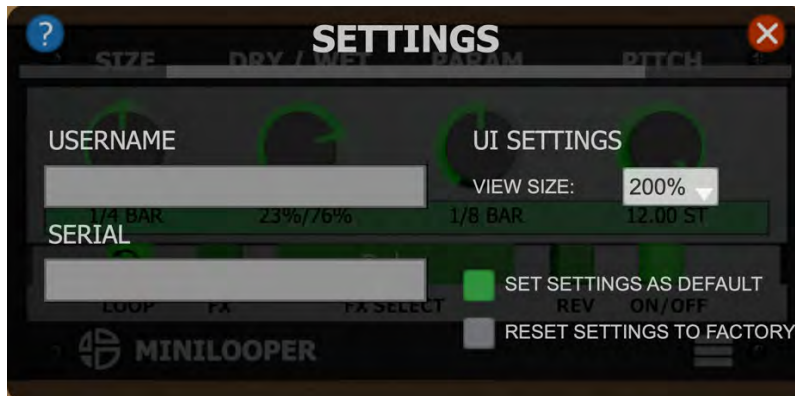
## 4.6 Pitch



Element	Description
Pitch	This knob defines the speed rate of the loop, it works like a linear pitch. -100 stands for half speed, 0 is the default value, 100 stands for double speed. This effect speeds up or slow down the loop when the “on/off” button is activated.
On	This button is by default activated. When this button is “on”, the Pitch knob is activate.
Off	When this button is “off” the Pitch knob has no effect.

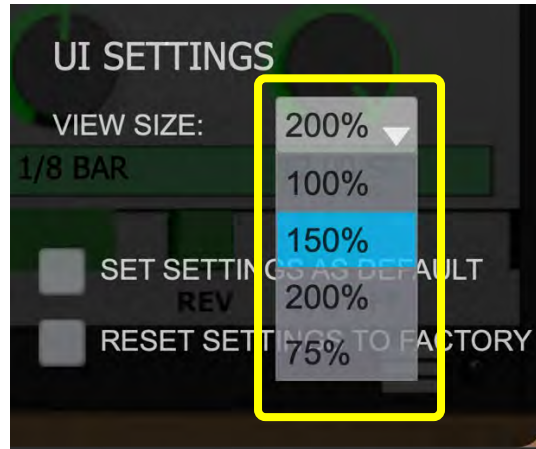


## 5.1 Settings view



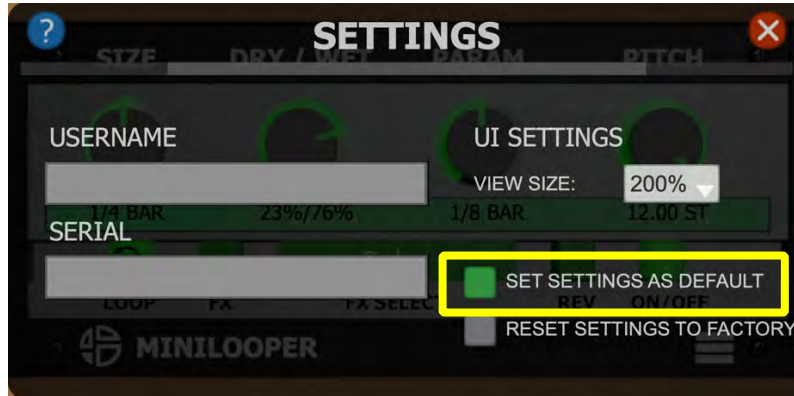
In this view you can modify settings of the plugin.

## 5.1.1 Plugin size



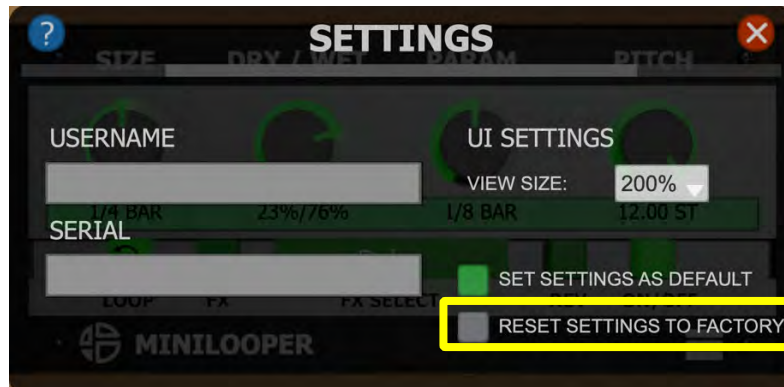
Click on the drop-down list to select one of the 4 sizes: 75 %,100%,150%,200%.

## 5.1.2. Set as Default



[Click](#) this button to set your settings as default.  
Each time you will launch the plugin these settings will be loaded.

## 5.1.3. Reset to Factory



Click this button to reset settings to factory.

## 5.1.4. Help

Click on the question mark icon to get fast access to the user manual.

